

How to use Hik-connect app iVMS-4500



Preparation

1. Download Hik-connect app iVMS-4500 and install it in your phone.
2. A Hikvision device which support cloud P2P.

Note: Hik-connect app iVMS-4500 is for Apple user, search in **iOS APP** store and for Android user, please search it in **Google Play**.

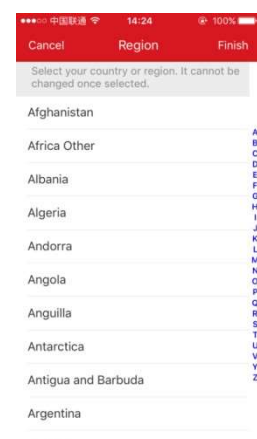
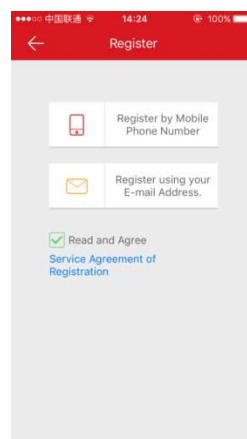
Steps:

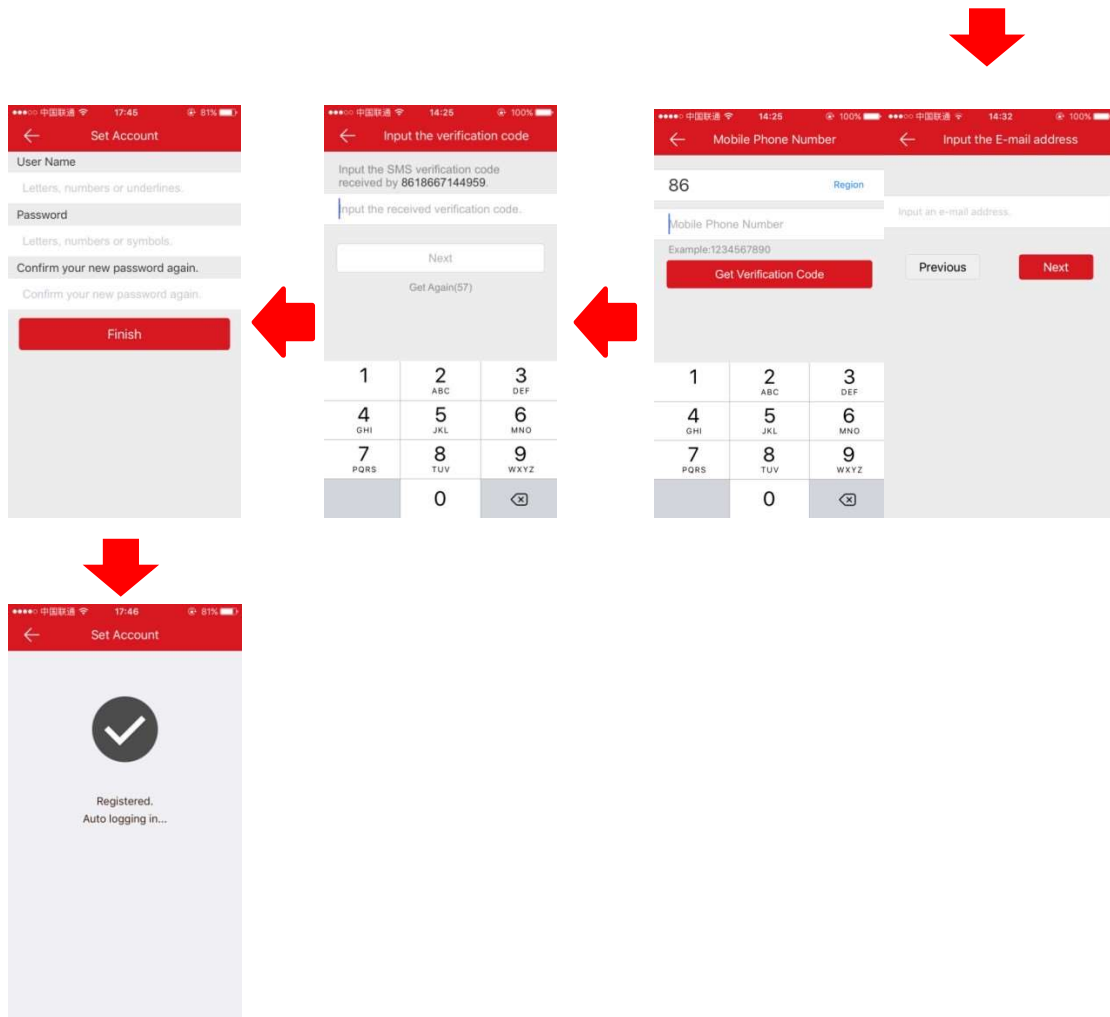
1. Download the app **iVMS-4500** and register a Hik-connect account at www.hik-connect.com
2. Set up the device and make device parameters properly.
3. Add the device into account, ready to enjoy the video.

Key Step 1: Register an account

Steps:

1. Open Hik-connect app and click "Register an account" in login page. Read and agree service agreement of registration, then choose a method to register the account. Choose the country for the account; please do not select a wrong country. Enter the mobile phone number or email address. Enter the received verification code. Set the user name and password for your account. Finish registration

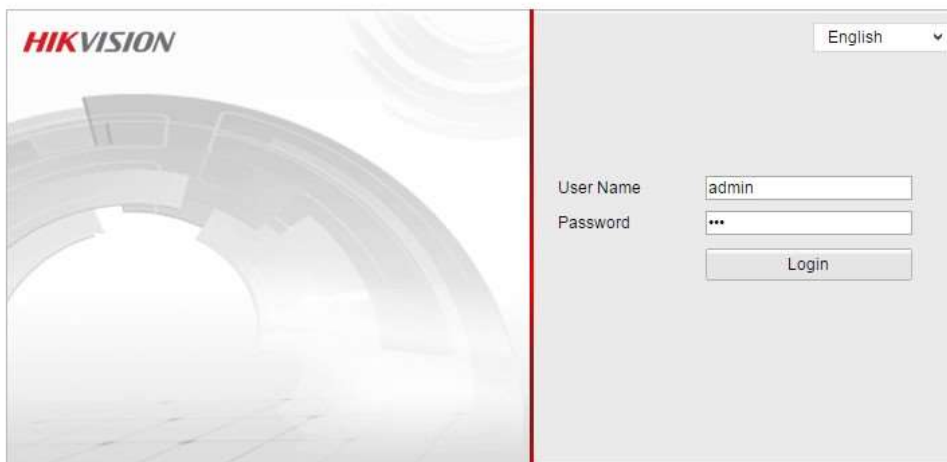




Key Step 2: Set up the device

Steps:

1. Login into the device via IE browser.



2. Set the device internet parameters properly in "Configuration-Advanced Configuration-Network-TCP/IP". Enable the "DHCP" and make sure that "DNS Server" been filled in. Local DNS server address and 114.114.114.114 are all available.

HIKVISION DS-2CD2Q10FD-IW

Live View Playback Log **Configuration** admin | Logout

Local Configuration
Local Configuration
Basic Configuration
Advanced Configuration
System
Network
Video/Audio
Image
Security
Basic Event
Smart Event
Storage

TCP/IP Port DDNS PPPoE SNMP QoS FTP Wi-Fi UPnP™ Email NAT Platform Access HTTPS

NIC Settings

Select NIC: lan
NIC Type: Auto
 DHCP
IPv4 Address: 192.168.33.151 [Test]
IPv4 Subnet Mask: 255.255.255.0
IPv4 Default Gateway: 192.168.33.1
IPv6 Mode: Route Advertisement [View Route Advertisement]
IPv6 Address: ::
IPv6 Subnet Mask: 0
IPv6 Default Gateway:
Mac Address: c4:2f90:59:8d:9d
MTU: 1500
Multicast Address:
 Enable Multicast Discovery

DNS Server

Preferred DNS Server: 192.168.33.1
Alternate DNS Server:

Save

©Hikvision Digital Technology Co., Ltd. All Rights Reserved.

3. Enable "Cloud P2P" function in "Platform Access" and make sure that the "Register Status" is online. The device cannot be added into account if the status is offline.

HIKVISION DS-2CD2Q10FD-IW

Live View Playback Log **Configuration** admin | Logout

Local Configuration
Local Configuration
Basic Configuration
Advanced Configuration
System
Network
Video/Audio
Image
Security
Basic Event
Smart Event
Storage

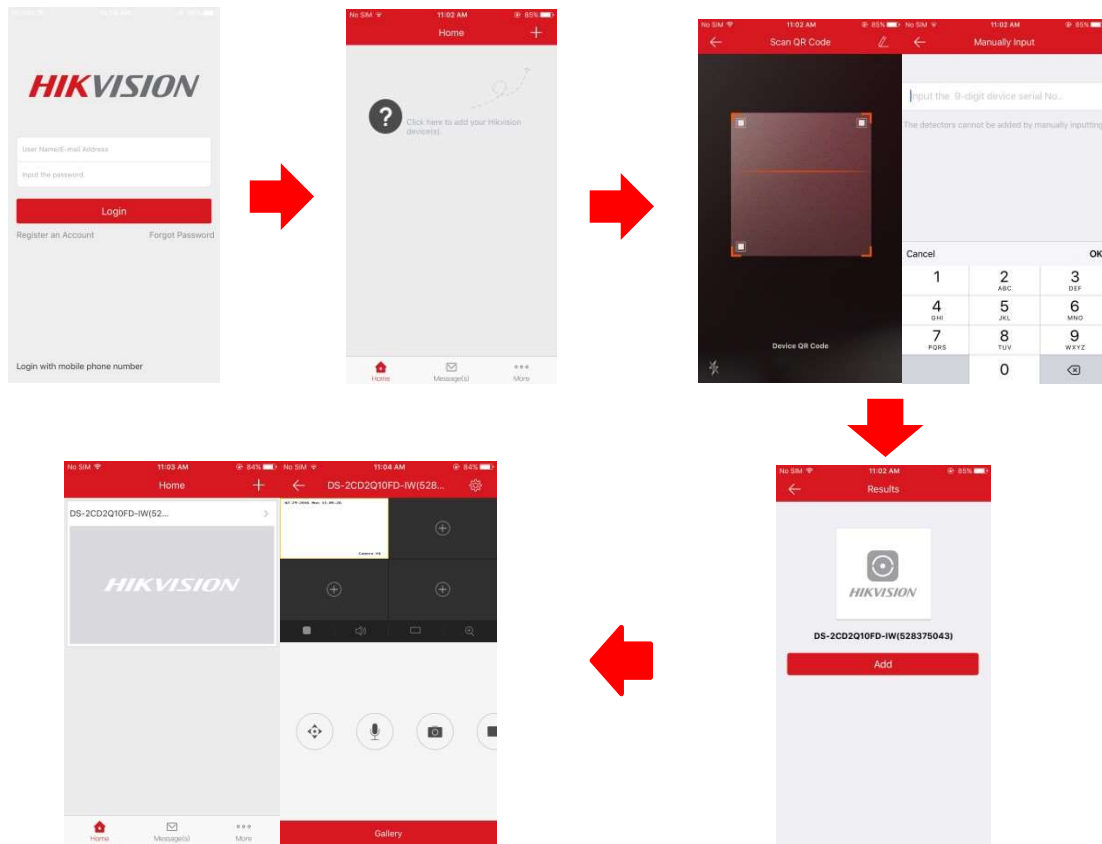
TCP/IP Port DDNS PPPoE SNMP QoS FTP Wi-Fi UPnP™ Email NAT **Platform Access** HTTPS

Enable
Access Type: EZVIZ Cloud P2P
Register Status: Online

Save

©Hikvision Digital Technology Co., Ltd. All Rights Reserved.

4. Open Hik-connect app on your mobile and enter the user name and password of your account. Click the “Plus” button at the top right corner of the app. Scan the device QR code or enter the device series number manually. Find the device and Click “Add” to complete

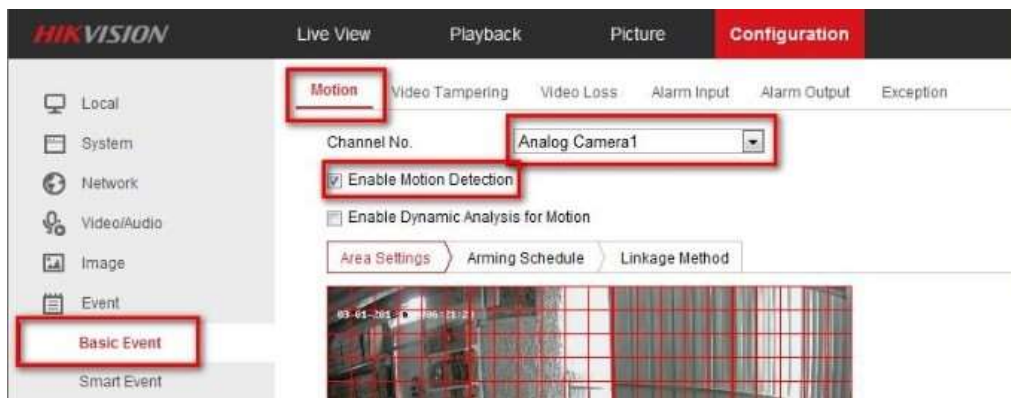


*Optional - Key Step 3: Set device motion detection alarm

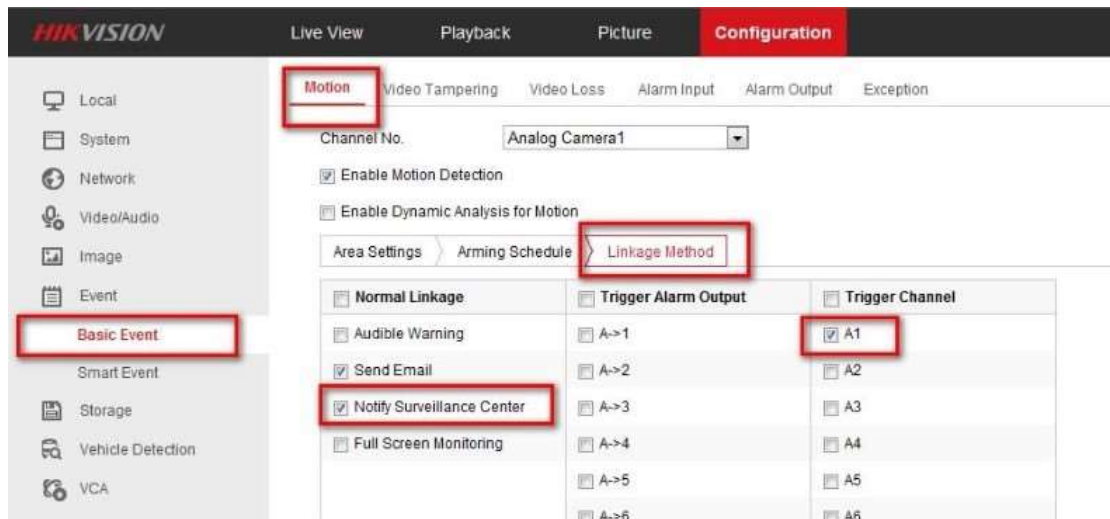
Note : The following step is optional, which is aim to receive the motion detection alarm of DVR/NVR in APP

Steps:

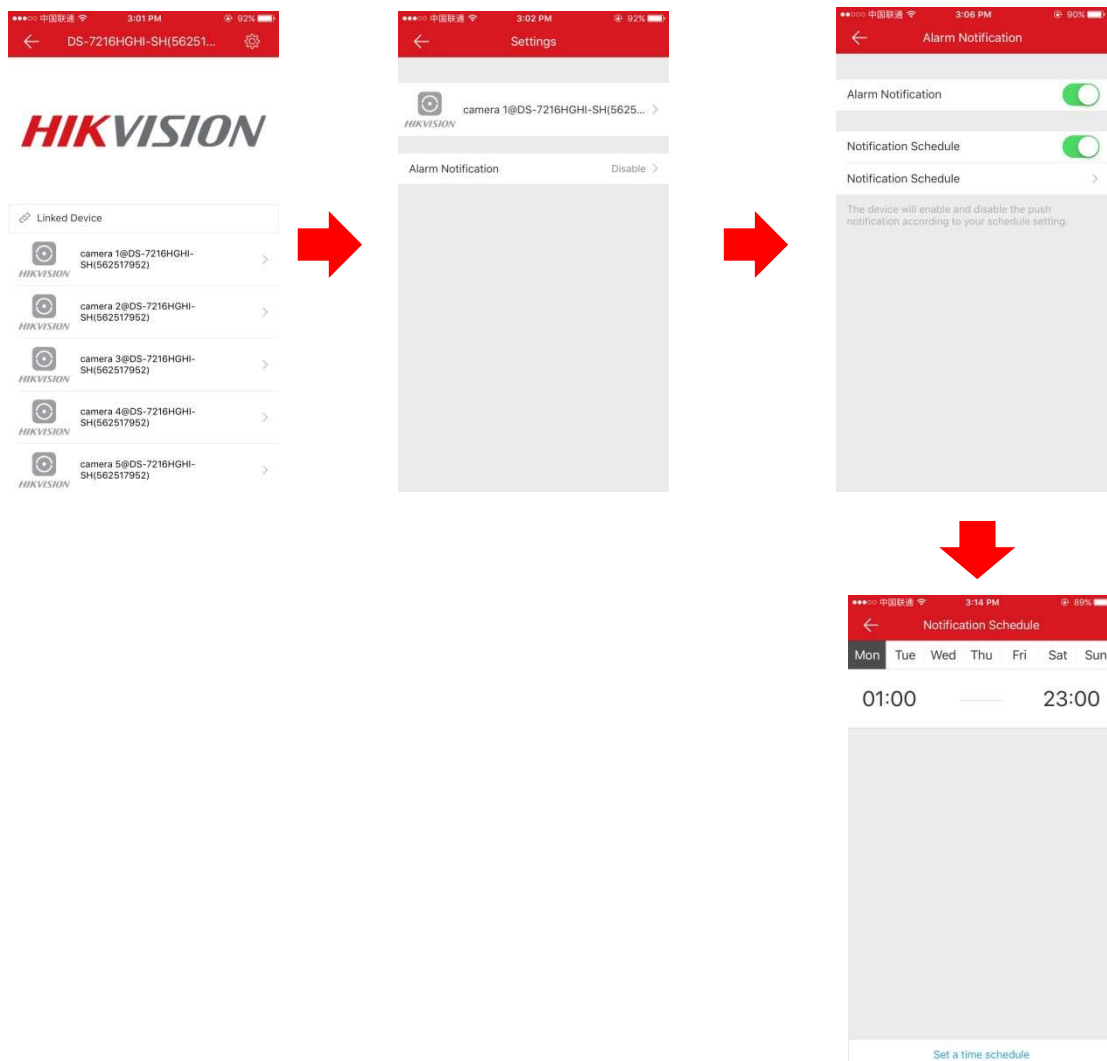
1. Enable the device motion detection and set the arming schedule.



2. Tick off the “Notify Surveillance Center” and trigger relevant channel.

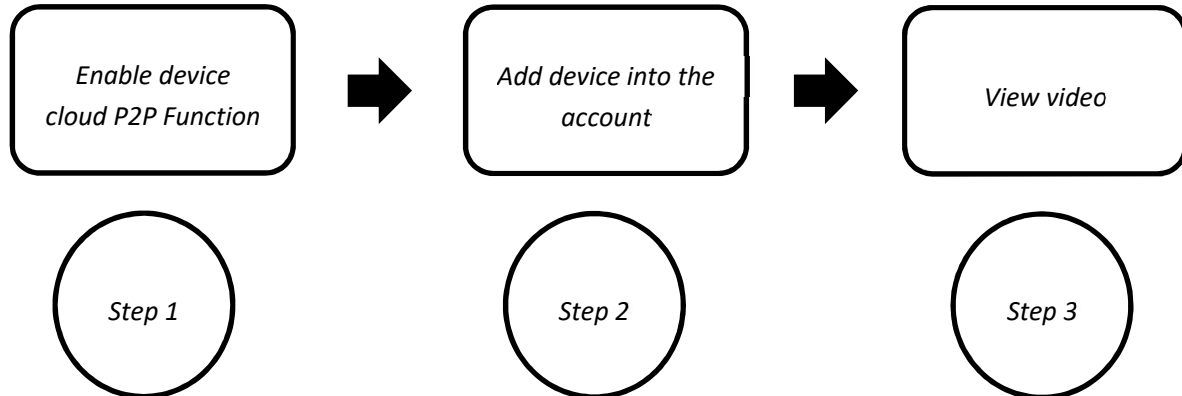


3. Login into Hik-connect account, click device title to enter linked device page and choose relevant channel. Click “Alarm Notification” button. Enable “Alarm Notification” and “Notification schedule”. Set the notification schedule for corresponding channel.



Frequency Asked Questions

As per the procedure above, to use Hik-connect, there are only 3 steps which are “enable the device Cloud P2P function”, “add the device into account” and “Play the real-time or recorded video from device”. The following are some frequency asked questions for each 3 steps.



Frequency asked question for step one

Device is offline

1. Check if the device is power on and the network patency.
2. Check if the cloud P2P function is enabled.
3. If the device and PC are in the same local network area, enter “telnet dev.hik-connect.com 8555” and “telnet www.hik-connect.com 80”.
4. Make sure that the selected country for the account is consistent with the device’s country.
5. Check if the device’s IP address conflict with other internet terminal’s IP address (Suggest to factory set the device).
6. Check if the device network parameters been properly set. Make sure the DNS Server address is filled in and available, the IP address and gateway match with the router’s IP address and gateway.
7. Check if the device and the router enabled “DHCP” (If there are two stage routing, enable “DHCP” for the first stage routing and disable “DHCP” for the second stage routing).
8. Check if the network is limited (require to binding the Mac address and IP address or port forwarding in the router)

Frequency asked question for step two

The device cannot be added: *when adding the device into account, a system message pops up to remind “The device cannot be added”, which means that background cloud server doesn’t have this device model’s capability set, R&D of device need to report the device’s capability set to the cloud server. When this phenomenon occurs, please give us a feedback and we will inform R&D to take good care if this issue.*

Server exception: *when getting the hint, please report to us as soon as possible.*

The device is offline, no search result is found: *Please check if the device has connected to the internet and enabled Cloud P2P function. Make sure the status is online which can be seen in “Platform access” page. If the status is online but still get this error, something may be wrong with background server, please report to us as soon as possible.*

The device cannot be added to cross-regional platform: *This error code means that the device and the account register to two different servers. It’s suggested to upgrade the device to the latest version and select the correct country for the account when registering. If still get the hint, please report the device serial number and account name to us.*

Wrong verification code: *The verification code is six capital letters which can be found from the sticker attaching on the device. Make sure to enter the right code and all the six letters are capitalized. If still get the error code, please refer to a “How to” document to find the real verification code of the device (How to find the challenge code for device which support cloud P2P).*

Frequency asked question for step three

The device is online but cannot view the video: *1. For R2 type network camera, the version 5.3.0 for June and August delete the cloud P2P function in the code level. Please upgrade the device to the latest version. 2. for other devices, check if the network condition is fine. If possible, lower the device parameters setting, such as image quality, bitrate, etc..*